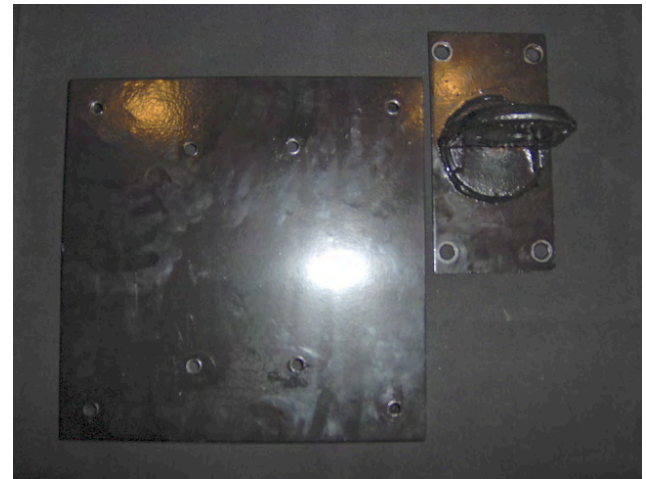
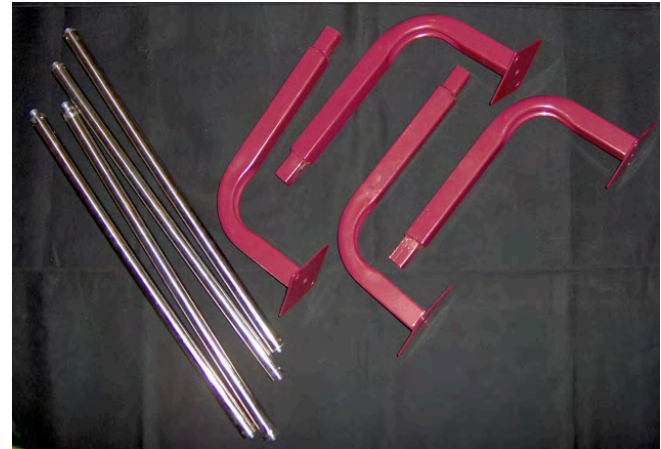




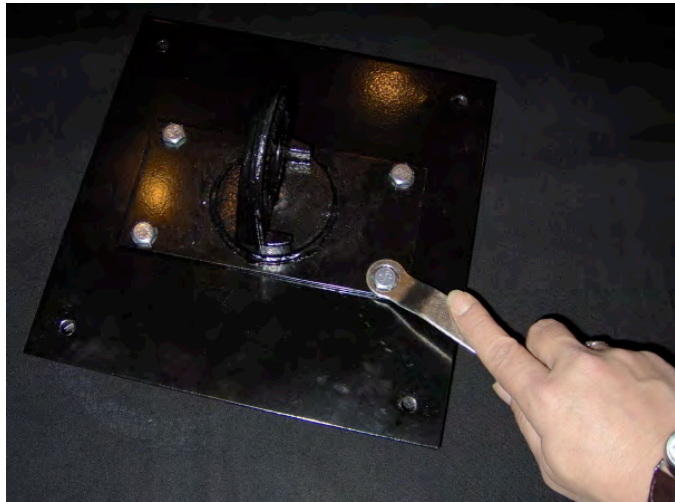
## AERIAL ASSAULT AUTO TRAP

### Parts Included:

- 12 - 3/8" Bolts
- 4 - 3/8" Washers
- 4 - 3/8" Nuts
- 1 - \_" Bolt
- 1 Spade Bolt with 2 3/8" washers
- 4 - Legs
- 1 - Mounting Plate
- 1 - Pivot Bracket
- 1 - Metal Tray
- 4 - Stacker Poles with 2 3/8" Allen Screws
- 1 - Horseshoe
- 1 - Black Main Spring
- 1 - Foot Pedal
- 1 - Main Unit



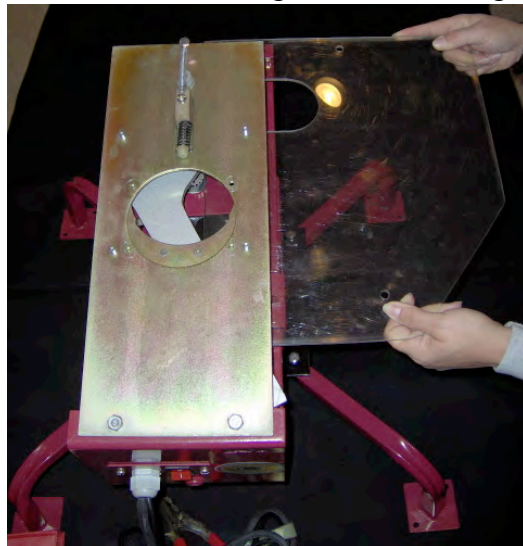
1. Attach Pivot Bracket to Mounting Plate with 4 3/8" bolts.



2. Attach Pivot Bracket to mount at bottom of trap with 1/2" bolt. Then insert Legs into bottom of mounting plate & secure with 3/8" bolts.



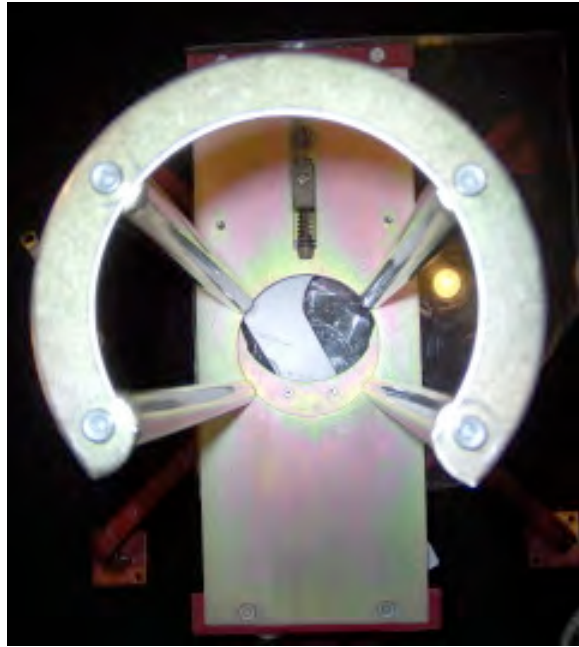
3. From back of trap, slide METAL tray in from right with cut corner on lower side & secure with 4 3/8" bolts. Ensure that tray sits ON TOP of the brackets, sliding the washer & tighten nut.



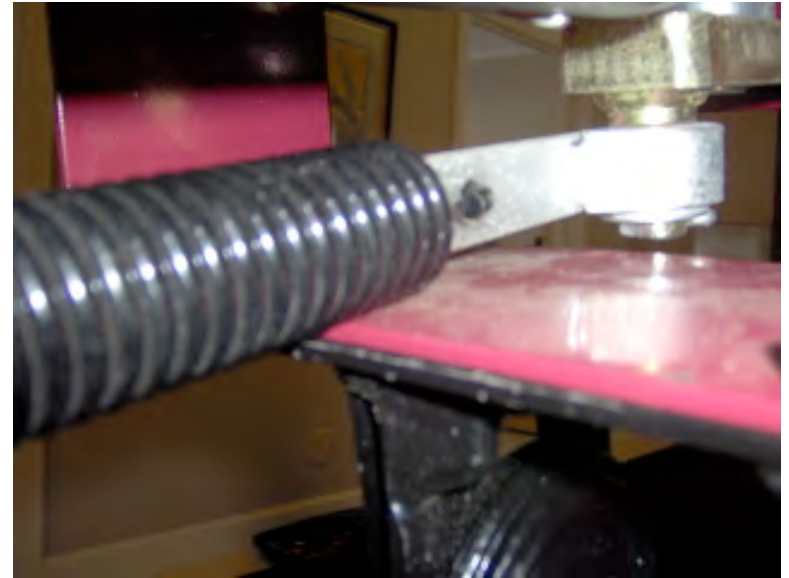
4. Insert stacker poles into holes surrounding feeder slot.



5. Attach Horseshoe to top of stacker poles with included allen screws ensuring opening is at back.



6. Rotate arm counter clockwise to 12:00. Insert Black Main Spring into silver swiveling spring hook. Attach Spade Bolt to spring & feed thru opening at back of trap.



PLEASE NOTE: Spade bolt & Spring hook MUST be perpendicular to ground in order to work properly.

Load clays, attach Foot Pedal cord to outlet & hook connectors to battery & you're ready to shoot!

**\*\*\*LOADING, SERVICE, TRANSPORT & STORING\*\*\***

You must ensure that the trap is in an un-cocked position when not in use. To do so, press the foot pedal & immediately turn the power off.

PLEASE DO NOT RETURN ITEM TO STORE. FOR QUESTIONS, CONCERNS OR WARRANTY INFORMATION,  
PLEASE CALL: 800-252-9247.